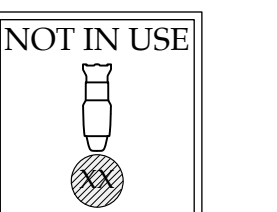


KEY:

- ETC SOURCE FOUR 26° - 575W
- ETC SOURCE FOUR 36° - 575W
- ETC S4 PAR MFL - 750W
- PAR 64 MFL WORKLIGHT - 1KW
- STRAND FRESNELITE 8" - 2KW
- ETC LUSTR LED WASH
- WYBRON FORERUNNER - 7.5"
- WYBRON FORERUNNER - 4.5"
- VARI*LITE 2500 SPOT
- MAC VIPER PERFORMANCE

| | | |
|-------|--------------|----------------------------------|
| 93 | 48'-3" | |
| 92 | 47'-9" | |
| 91 | 47'-3" | |
| 90 | 46'-9" | |
| 89 | 46'-3" | |
| 88 | 45'-9" | |
| 87 | 45'-3" | |
| 86 | 44'-9" | |
| 85 | 44'-3" | |
| 84 | 43'-9" | |
| 83 | 43'-3" | |
| 82 | 42'-9" | HOUSE LEGS #6 |
| 81 | 42'-3" | HOUSE BORDER #6 |
| 80 | 41'-9" | |
| 79 | 41'-3" | |
| 78 | 40'-9" | |
| 77 | 40'-3" | |
| 76 | 39'-9" | |
| 75 | 39'-3" | HOUSE 6TH ELECTRIC |
| 74 | 38'-9" | |
| 73 | 38'-3" | |
| 72 | 37'-9" | |
| 71 | 37'-3" | |
| 70 | 36'-9" | |
| 69 | 36'-3" | HOUSE LEGS #5 |
| 68 | 35'-9" | HOUSE BORDER #5 |
| 67 | 35'-3" | |
| 66 | 34'-9" | |
| 65 | 34'-3" | XXX HOUSE 5TH ELECTRIC - NIU XXX |
| 64 | 33'-9" | |
| 63 | 33'-3" | GERBETS OPERA WHITE |
| 62 | 32'-9" | GREY PLASTIC |
| 61 | 32'-3" | WHITE SCRM |
| 60 | 31'-9" | FULL STAGE BLACK |
| 59 | 31'-3" | |
| 58 | 30'-9" | BLACK BORDER |
| 57 | 30'-3" | |
| 56 | 29'-9" | HOUSE LEGS #4 |
| 55 | 29'-3" | HOUSE BORDER #4 |
| 54 | 28'-9" | |
| 53 | 28'-3" | |
| 52 | 27'-9" | XXX HOUSE 4A ELECTRIC - NIU XXX |
| 51 | 27'-3" | |
| 50 | 26'-9" | OVERHEAD MONITOR |
| 49 | 26'-3" | HOUSE 4TH ELECTRIC |
| 48 | 25'-9" | |
| 47 | 25'-3" | WHITE PLASTIC |
| 46 | 24'-9" | GERBETS STUDIO GREY - RP |
| 45 | 24'-3" | BLACK SCRM |
| 44 | 23'-9" | SPLIT BLACK |
| 43 | 23'-3" | |
| 42 | 22'-9" | |
| 41 | 22'-3" | HOUSE LEGS #3 |
| 40 | 21'-9" | HOUSE BORDER #3 |
| 39 | 21'-3" | |
| 38 | 20'-9" | |
| 37 | 20'-3" | |
| 36 | 19'-9" | |
| 35 | 19'-3" | |
| 34 | 18'-9" | HOUSE 3A ELECTRIC |
| 33 | 18'-3" | |
| 32 | 17'-9" | |
| 31 | 17'-3" | HOUSE 3RD ELECTRIC |
| 30 | 16'-9" | |
| 29 | 16'-3" | |
| 28 | 15'-9" | SMALL PROJECTION SCREEN |
| 27 | 15'-3" | SPLIT BLACK |
| 26 | 14'-9" | HOUSE LEGS #2 |
| 25 | 14'-3" | HOUSE BORDER #2 |
| 24 | 13'-9" | |
| 23 | 13'-3" | |
| 22 | 12'-9" | |
| 21 | 12'-3" | |
| 20 | 11'-9" | HOUSE 2A ELECTRIC |
| 19 | 11'-3" | |
| 18 | 10'-9" | HOUSE OVERHEAD MONITOR |
| 17 | 10'-3" | HOUSE 2ND ELECTRIC |
| 16 | 9'-9" | |
| 15 | 9'-3" | |
| 14 | 8'-9" | HOUSE LEGS #1 |
| 13 | 8'-3" | HOUSE BORDER #1 |
| 12 | 7'-9" | |
| 11 | 7'-3" | |
| 10 | 6'-9" | |
| 9 | 6'-3" | |
| 8 | 5'-9" | HOUSE 1A ELECTRIC |
| 7 | 5'-3" | |
| 6 | 4'-9" | |
| 5 | 4'-3" | HOUSE 1ST ELECTRIC |
| 4 | 3'-9" | |
| 3 | 3'-3" | HOUSE HARD LEGS |
| 2 | 2'-9" | |
| 1 | 2'-3" | FULL STAGE BLACK |
| 0'-0" | | PLASTER LINE |
| | | TBM |
| # | DIST. TO PL. | CULLEN HANG |



This Drawing Represents Visual Concepts And Construction Suggestions Only.



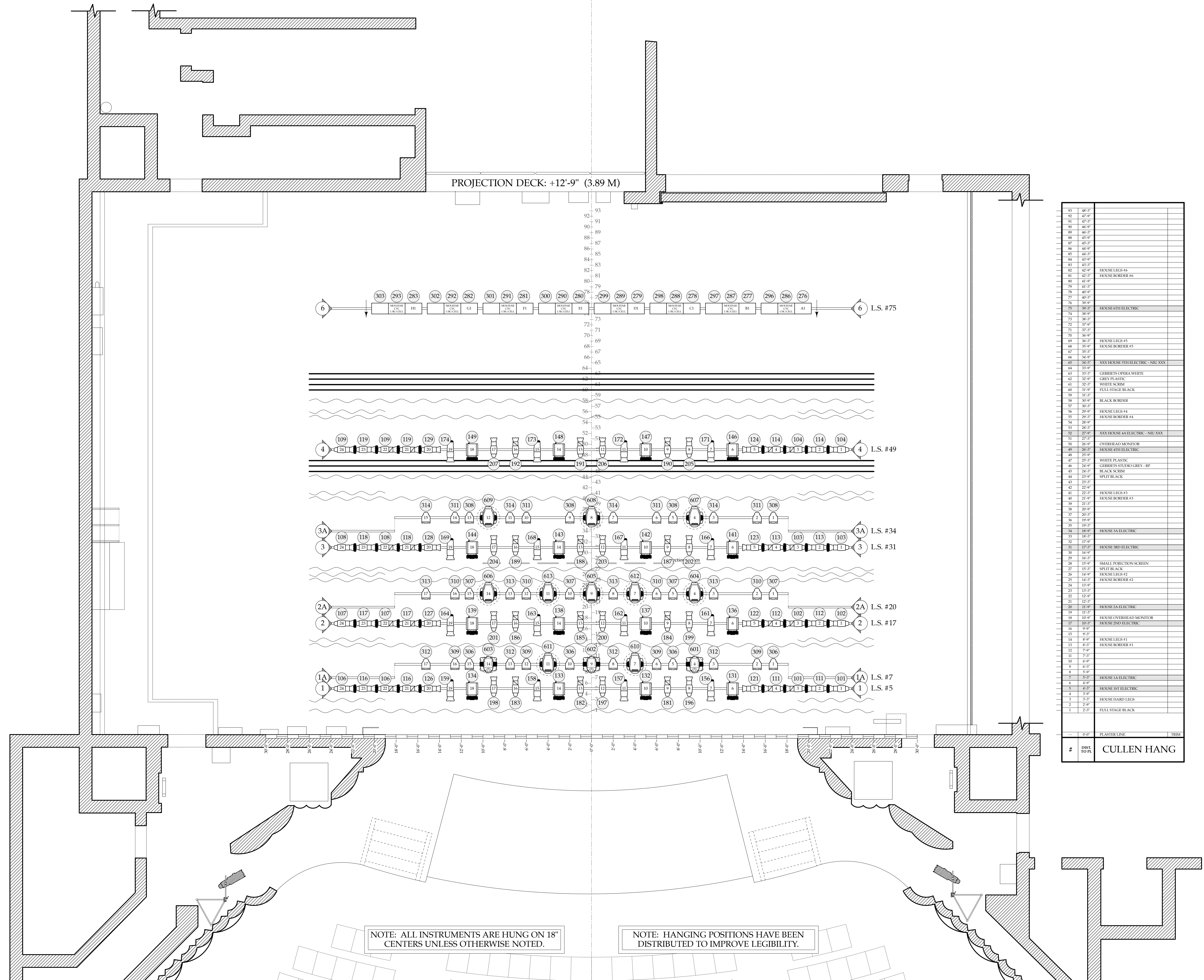
The Designer is unqualified to determine the structural or electrical appropriateness of this design. He/She will not assume responsibility for improper engineering, construction, handling or use. All materials and construction must comply with the most stringent applicable federal and local fire, safety, energy and environmental codes.



DIRECTOR
SETS COSTUMES
LIGHTING

OVERHEADS

SCALE: 1/4" = 1' - 0"
DATE: 8/2020
DRAWN: PA/MC



NOTE: ALL INSTRUMENTS ARE HUNG ON 18" CENTERS UNLESS OTHERWISE NOTED.

NOTE: HANGING POSITIONS HAVE BEEN DISTRIBUTED TO IMPROVE LEGIBILITY.